



Reconciling the Community to the Nations

Rev. Dr. Gerard I. Bolling

[#miLCMSpastors](#)



Michigan District
The Lutheran Church - Missouri Synod

Rev. Dr. Gerard I. Bolling

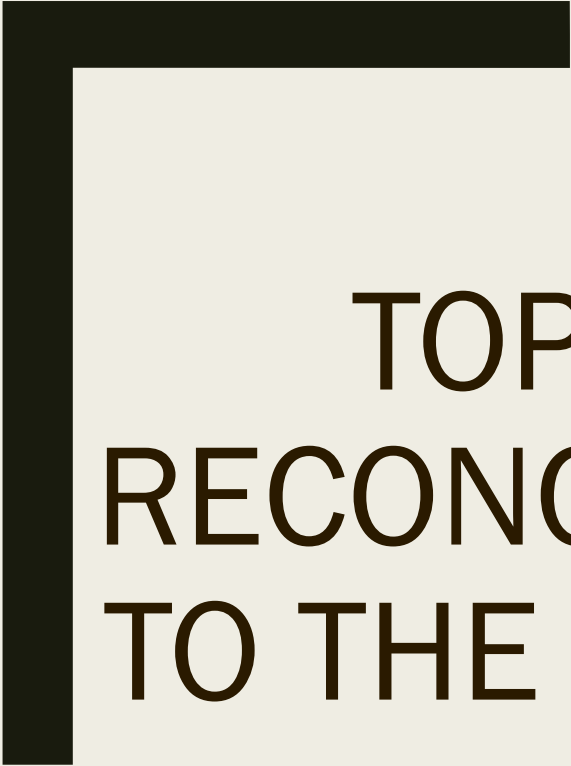


@bolling_gerard

#miLCMSpastors



Michigan District
The Lutheran Church - Missouri Synod



TOPIC 3:
RECONCILIATION
TO THE NATIONS



DEACONESS MOTTO

Wilhelm Löhe

The Deaconess Motto

What do I wish? *I wish to serve.*

Whom do I wish to serve? *The Lord, in His poor and needy ones.*

And what is my reward? *I do not serve either for reward or for thanks, but out of gratitude and love; my reward is that I may do this.*

And if I perish in doing it? *“If I perish, I perish,” said Queen Esther, who knew not Him for love of Whom I would perish; but He will not let me perish.*

And if I grow old? *Still shall my heart keep fresh as a palm tree, and the Lord shall satisfy me with grace and mercy.*

I go in peace and free from care.

~Wilhelm Löhe

Three spheres of
CONGREGATIONAL &
ORGANIZATIONAL
Ministry
LEADERSHIP

STAFF MEMBERS

LAY LEADERS

CONGREGATION

Key Objectives

MINISTRY

MISSION

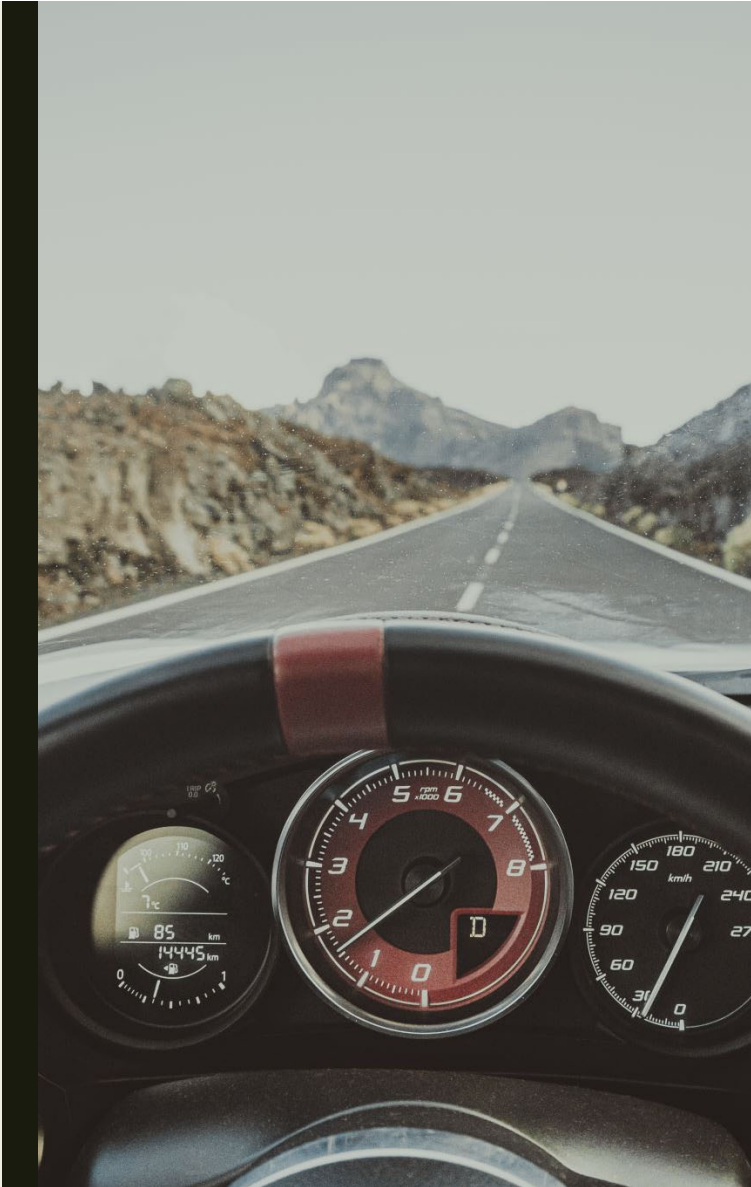
Organizational dashboard in ministry

- Dashboard-clarifying factors that gear an org. toward its mission statement and core values
- Should include Core Values
- Should match your Mission Statement
 - *Objectives and how will reach them*
- Should reflect your Vision Statement
 - *Where the organization is going*
- Should include many factors
 - *Congregational Life, Youth, Activities, Long term mission, short term mission, Goals, etc.*
 - *Also good indicator of SELF*



Church DASHBOARD ACTIVITY

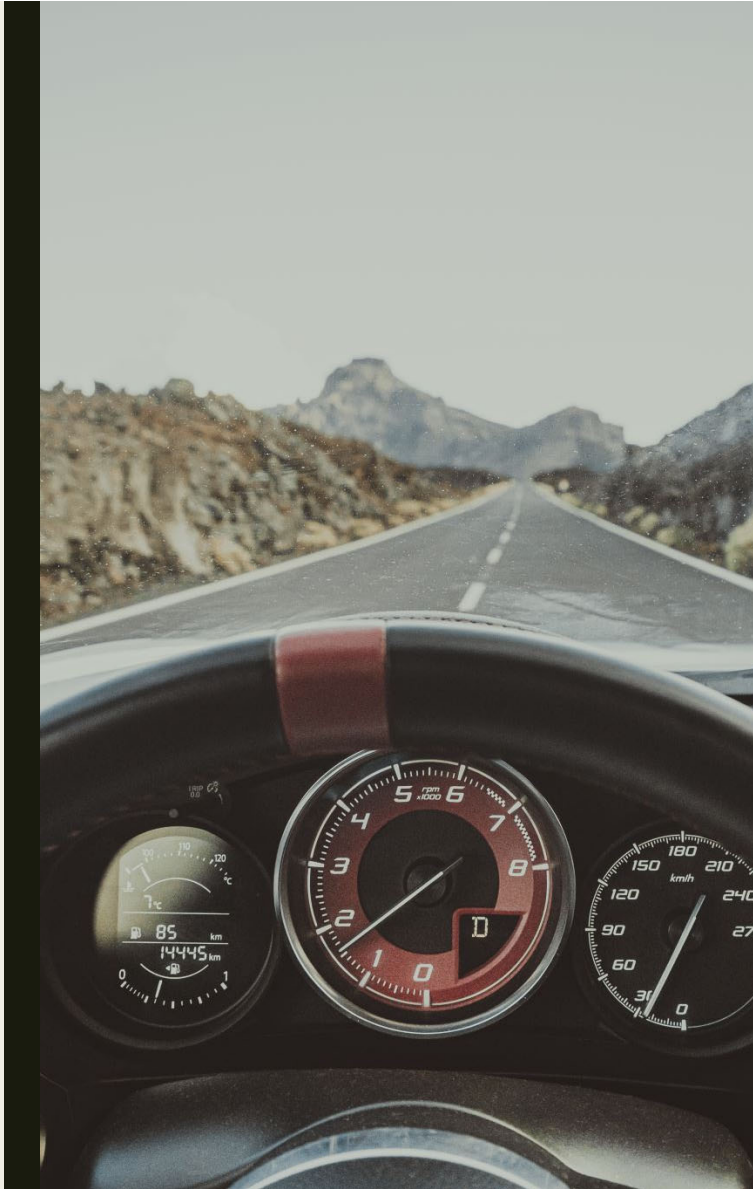
- What are your Core Values?
 - *St. Mattress Lutheran Church values Christ centered servanthood, creativity, and innovation.*
- What is your Mission Statement?
 - *St. Mattress Lutheran Church exists to reflect the love of God as bearers of light through servanthood, creativity, and innovation within our community.*
- What is your Vision Statement?
 - *St. Mattress is a caring community that energizes others to grow in Faith and serve in love.*



PERSONAL DASHBOARD ACTIVITY

- What are your Core Values?
 - *Tina values Integrity, Trust, Boundaries*
- What is your Mission Statement?
 - *Tina's mission is to serve...*
- What is your Vision Statement?
 - *Tina is a loving person who.....*





Why do I need to know this?

- Knowing self is an important part of Churchwork.
- Grounds you on vocational Journey
- Allows for you to look back on how you align with your calling



OTHER TOOLS TO RENEW MINISTRY

Listing

NEW

GROWING

STAGNANT

FALLING



CONTEXTUALIZATION!



CONTEXTUALIZATION





CONTEXTUALIZATION!

CULTURE

WHAT DICTATES IT?



Culture is dictated by

- DR. BOLLING-ism
- Aristotelian Elements of Theatre
 - *Action*
 - *Character*
 - *Thought*
 - *Language*
 - *Music*
 - *Spectacle*

Culture
dictated in the
same sort of
way



Action-Swag



Character-How we are shaped



Thought-Education



Language-How we speak



Music-What we listen to and when we pause



Spectacle-What “wows us” as human beings



EXAMPLES

ACTION-Swag



HOW DO YOU WALK?



HOW DO YOU TALK?



HOW YOU INTERACT
WITH THE WORLD

CHARACTER-
HOW WE ARE
SHAPED

Who raised you?

How did you learn to take control
of situations?

Family background

Who are your friends?

Where did you grow up?

THOUGHT- EDUCATION LEVEL

Street or book smart?

Reading?

Writing?

Math?

Trauma vs Resilience

LANGUAGE- HOW WE SPEAK

Do you
have many
registers?

How were
you trained
to adapt?

How do you
speak to
different
audiences?

How do you
revere
authority?

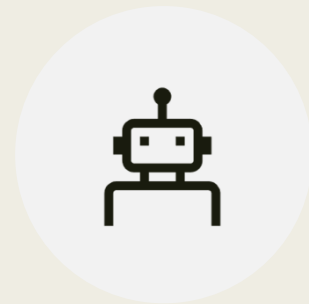
MUSIC-what we listen to and when we pause



SOMEONE SHOT?



CHILDREN?



“STORY BASED”

Spectacle-what amazes us

- Someone “Making it out”
- What causes you to feel “mountaintop experiences?”



Cultural connotations to remember in ministry to THE WORLD

- 5 MAIN CULTURAL ISSUES
 - *CUSTOMS, LAWS, DRESS, STRUCTURAL UNDERSTANDING, SOCIAL STANDARDS, TRADITION.*
- STORY BASED CULTURE
- SHAME/HONOR CULTURE
- TRADITION BASED CULTURE
- MODESTY CULTURE
- CAPITALISTIC CULTURE



TURN AND TALK



COMMUNICATION

Notably, the most markable difference is “language”

- Wish we had time to cover it all—let’s tackle this one
- Lets talk about Urban Language/POC Language
- Language is an expression of all other Aristotelian Elements.

Lets talk
about...slang

Common way to
communicate in the
City or amongst
Minority communities

Fluid

Representative of
today's culture

Metaphoric

Related to
Colloquialism

Slang

When should
we use
slang?

ALMOST NEVER.



When Will we
hear slang?

ALMOST ALWAYS

How do I adapt?

LEARN IT, RETAIN
IT, EXPLAIN IT.



You must communicate to the best of your ability



You must learn to take non precise language and make it precise



You must interpret for those

In the user community
Outside the user community
In other user communities

Why must I know slang?

TURN AND
TALK: What
are your
experiences
with slang?



01

Listen for
context

02

Ask for
clarification

03

Listen to your
kids

04

Watch TV and
movies! Learn
it

05

Ask people of
color—I
promise they
will teach you.

How can we combat slang?

WHAT IS SLANG?

- Communication via a means that the people will understand
- Emotional shorthand
- Verbal poetry
- Mark of a community
- Colloquialisms of a community
- Source of inclusion

SLANG IN ASL

- https://drive.google.com/file/d/1Sg9ePJf453_ifxpl6l-FYjCSpLp4s7bU/view?fbclid=IwAR2ZmZhTtodZduNA08sYZD_WYS0U1BP-JBTep-aPYxFpaiLFDfMOCCGNyc

What can I do?

1

Respect
people of color

2

Don't ask
People to give
up who they
are

3

Advocate for
Others

4

Love more

USE OF SLANG TO BRIDGE THE GAP

- COME HUMBLE AS A STUDENT
- POINT OF UNDERSTANDING (making it real for students)
- FILTERED LANGUAGE

CODE SWITCHING

Switching from one linguistic code to the next depending on the social context/setting.

Turn and talk

- How can I use slang to engage the culture?

Rev. Dr. Gerard I. Bolling, MDiv, EdD
Assistant Professor of Leadership &
Theology
Lead Pastor, Bethlehem Lutheran Church
St. Louis, MO 63109
347-257-7599 call/text
Gerard.Bolling@concordia.edu
PaxDomini99@aol.com



Q & A?

