

people of
HOPE
IT'S TIME!

A graphic featuring the text "people of HOPE IT'S TIME!". "people of" is in a light blue script font. "HOPE" is in a large, bold, dark blue sans-serif font. "IT'S TIME!" is in a bold, red sans-serif font. There are several icons: a small white megaphone on the "P" of "HOPE", a red double-headed arrow inside the "O" of "HOPE", and a row of five stylized human figures in green, orange, grey, blue, and yellow at the bottom.

NUNES & ASSOCIATES



NUNES & ASSOCIATES

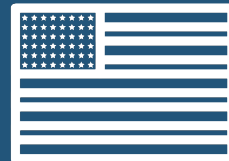


NI NUNES
& ASSOCIATES

What **concerns** me,
 disturbs me,
 energizes me,
 fatigues me,
 encourages me,
 gets my attention
 makes me HOPEFUL
regarding this time of growing
diversity in the United States?

ICEBREAKER

1960: 88%
2060: 44%





QUOTE OF THE DAY

January 1, 2001

The 21st century will be the century in which we redefine ourselves as the first country in world history which is literally made up of every part of the world.



Kenneth Prewitt

U.S. Census Bureau, director
Professor, Columbia University

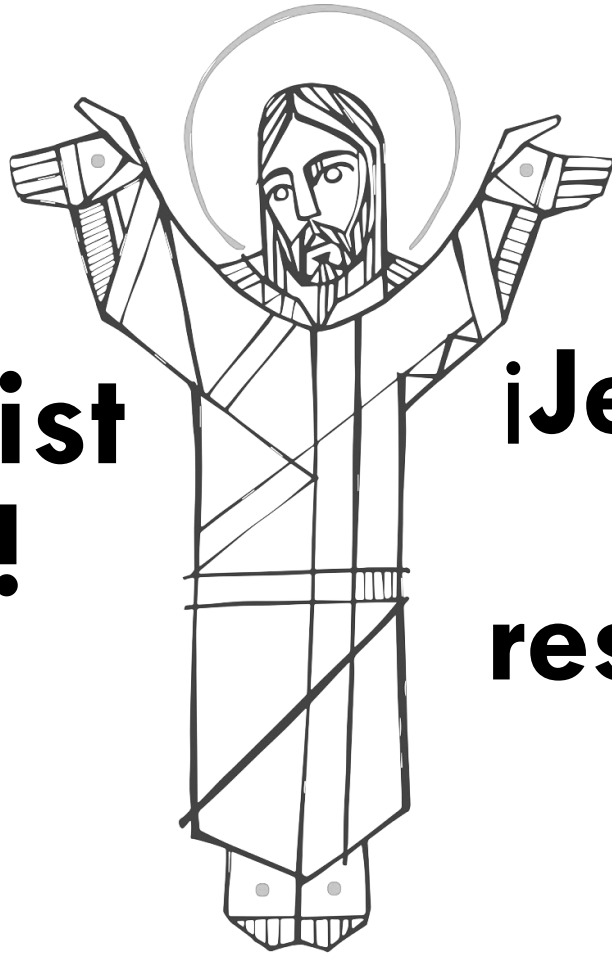


The image of God (imago Dei)
& the hope of God (spes Dei)
to help us think about DIVERSITY



people of
HOPE
★ IT'S TIME! ★



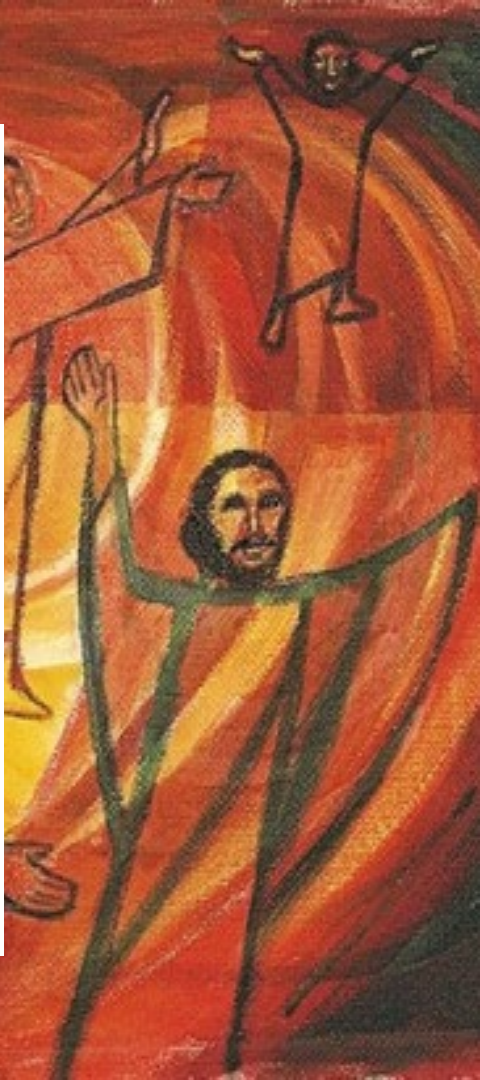


**Jesus Christ
is Risen!**

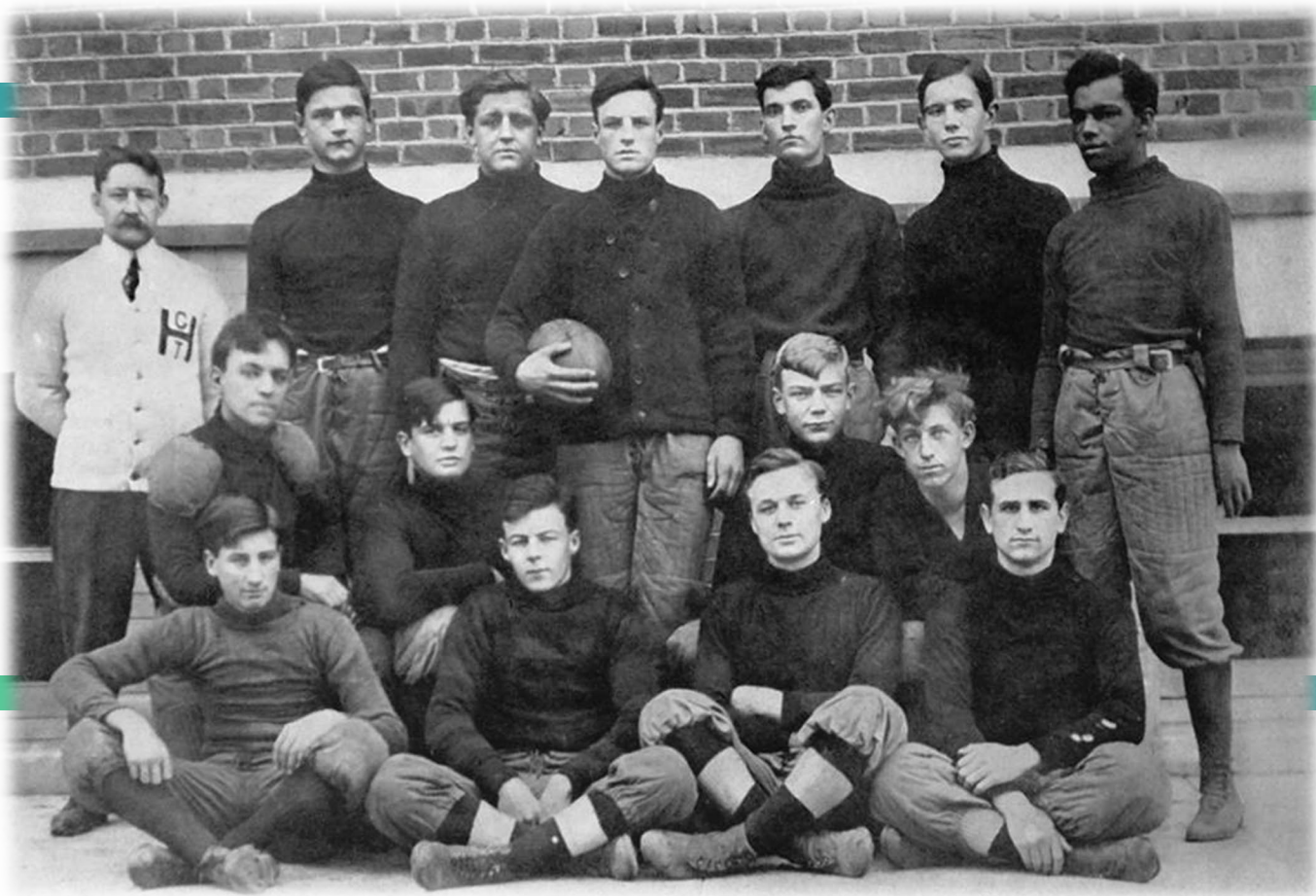
**¡Jesucristo
ha
resucitado!**



They may be fine
Easter preachers,
but they are very poor
Pentecost preachers. . . .



The image of God (imago Dei)
& the hope of God (spes Dei)
to help us think about diversity
THEN SPEAK and ACT!



“The Nazi treatment of the Jew is repulsive,
but how did we treat the American Indians.
We fed them whiskey, cheated them,
took their lands away and locked them on reservations!
What have we done
to the American Negro?
Try to have a colored boy enrolled
in some of our upper schools,
and you will find part of the answer.”

Walter A. Maier, *Peace through Christ*, 1940, p 32

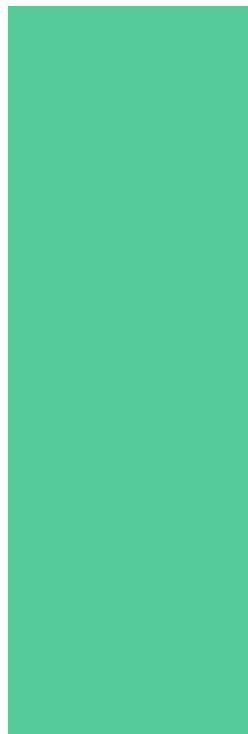
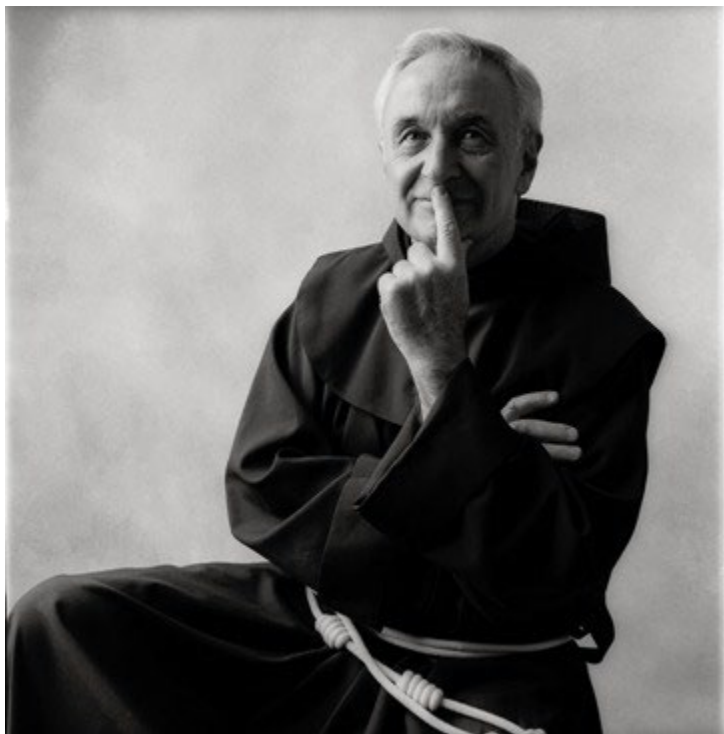


Nunes & Associates

works with Christian non-profit organizations to develop strategies for DEI (diversity, empowerment, and inclusion) rooted in:


- ✓ redeeming relationships,
- ✓ building resilience,
- ✓ nurturing belonging,
- ✓ promoting mutual respect.



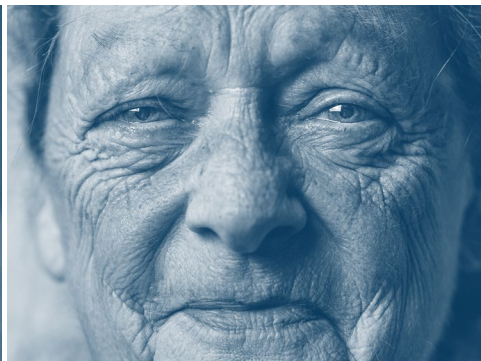


Father Mychal Judge
1933-2001



- 
- 1 Lord, take me where You want me to go.
 - 2 Teach me what You want me to know.
 - 3 Let me meet who You want me to meet.
 - 4 Tell me what You want me to say.
 - 5 And keep me out of Your way.
- Amen.





people of
HOPE
IT'S TIME!

The logo features the word "people" in a blue script font, "of" in a smaller blue script font, and "HOPE" in large, bold, dark blue capital letters. A red double-headed arrow is positioned inside the 'O' of "HOPE". Below "HOPE" is the phrase "IT'S TIME!" in bold red capital letters. At the bottom of the logo are several colorful stick figures in green, orange, blue, and yellow, some standing and some holding hands.



3 ways to think about **BELONGING**

Social “These are my friends”
Leadership “I’m at the table.”
Ownership “This is my church!”

PURE MICHIGAN®

people of
HOPE
IT'S TIME!





Where **Christ** is...there is
pure **grace** and no law;
pure **mercy** and no sin;
pure **life** and no death;
pure **heaven** and no hell.



NI NUNES
& ASSOCIATES

people of
HOPE
IT'S TIME!

A graphic featuring the text "people of HOPE IT'S TIME!". "people of" is in a light blue script font. "HOPE" is in a large, bold, dark blue sans-serif font. "IT'S TIME!" is in a bold, red sans-serif font. There are several icons: a small white megaphone on the "P" of "HOPE", a red double-headed arrow inside the "O" of "HOPE", and a row of five stylized human figures in green, orange, grey, blue, and yellow at the bottom.

NUNES & ASSOCIATES